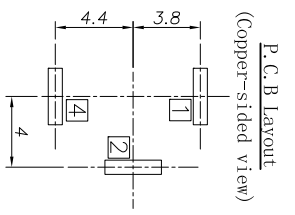
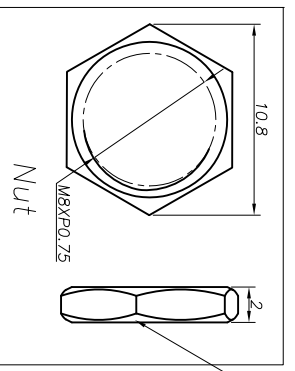
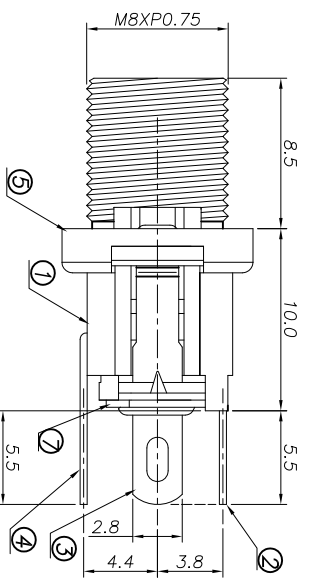
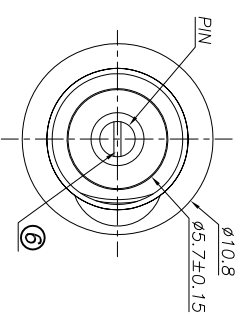
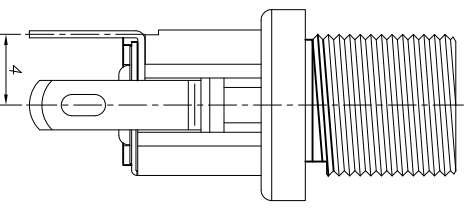


| | | | |
|-----------|-------------|------|-------------|
| REV. LTR. | DESCRIPTION | SIGN | DATE |
| | | Lucy | Jan 6, 2012 |



Washer optional one(墊片任選一款)



Ordering information:

DC025BM-□ □ □

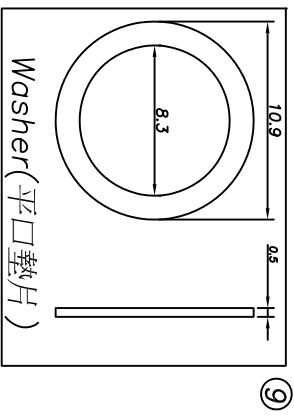
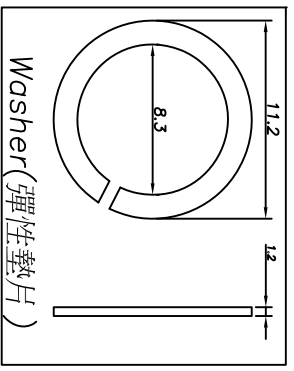
(1) (2) (3)

(1): Series No

(2): Schematic option: A B

(3): Center pin diameter:

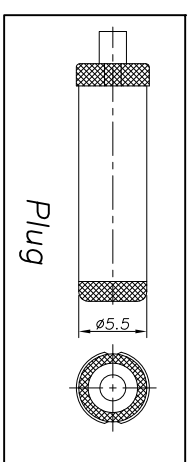
H=2.0 | =2.35 J=2.5



| | | | |
|-----------|-------------------|-------------------|-------------------|
| Model No. | DC025BM- <u>H</u> | DC025BM- <u>I</u> | DC025BM- <u>J</u> |
| PIN | φ2.0 | φ2.35 | φ2.5 |

| | | |
|-----------|-----------------|-----------|
| Model NO. | DC025BM-A | DC025BM-B |
| Schematic | | |
| | CIRCUIT DIAGRAM | |

□: TERMINAL NO.



SPECIFICATION

1. Rating : 30V 3.0A;
2. Contact resistance: $\leq 50m\Omega$;
3. Insulation resistance: $\geq 100M\Omega$ (DC500V);
4. Withstand voltage: 500VAC ;
5. Insertion and extraction force: 3-30N;
6. life test: 5,000 cycles.

| | | | |
|-----------------------|---|-----------------|---------------|
| ⑨ Washer | 1 | Steel | Ni-Plating |
| ⑧ Nut | 1 | Brass | Ni-Plating |
| ⑦ Washer | 2 | Bakelite | |
| ⑥ Pin | 1 | Bronze | Ni-Plating |
| ⑤ Bushing | 1 | Brass | Ni-Plating |
| ④ Spunt Terminal | 1 | Brass | Cu-Sn-Plating |
| ③ Tip Spring | 1 | Phosphor bronze | Cu-Sn-Plating |
| ② Center pin terminal | 1 | Brass | Cu-Sn-Plating |
| ① Housing | 1 | PBT | Black |

| | | | | |
|--------------|------------------|--------------------|------------------|-------------|
| UNIT:MM | TYPE: | MODEL NO: | PAPER NO. A4 | PAGE 1 OF 1 |
| | DC POWER JACK | DC025BM- <u> </u> | TOLERANCE ANGLES | SCALE |
| | | | ±0.3 | VER |
| DESIGNER BY: | Lucy Jan 4,2012 | | ±2° | FULL |
| CHECK BY: | Matt Jan 4,2012 | | | 3 |
| APPROVED BY: | Ocean Jan 4,2012 | | | |

丞永實業有限公司
BLUE SOURCES ELECTRONICS CO.,LTD.